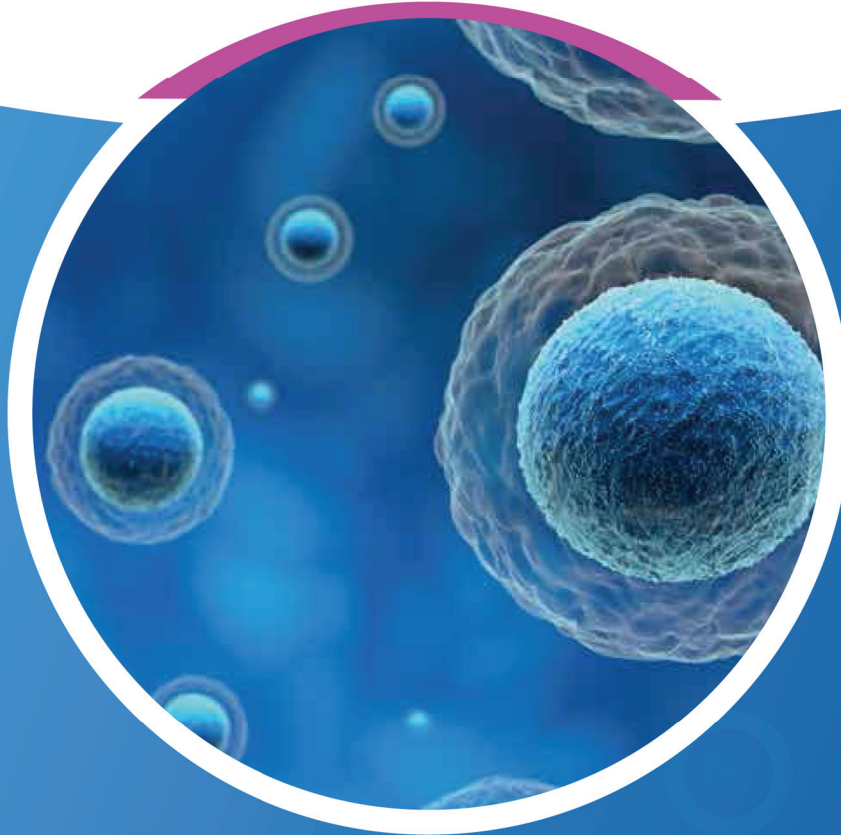


Stable Cell Lines To Speed Up Drug Discovery

✓ Fc Receptors ✓ GPCRs ✓ Immune Checkpoints ✓ CLDN18.2 ✓ COVID



Ready-to-use target
expressing cells save
months of your time



Guaranteed target
expression or function



High reliability and data
reproducibility enabled by
15+ passages of stability

Available in Canada from...

MJS
BioLynx
INC.

1-888-593-5969 • www.biolynx.ca • tech@biolynx.ca



Fc Receptor Stable Cell Lines

Ready-to-use for your antibody screening

Key Features

- Ready to use for antibody binding, affinity and half-time analyses.
- 8 most popular FcγR members including polymorphic versions.

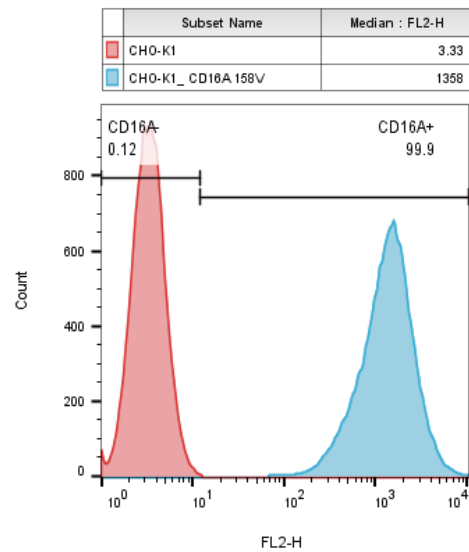


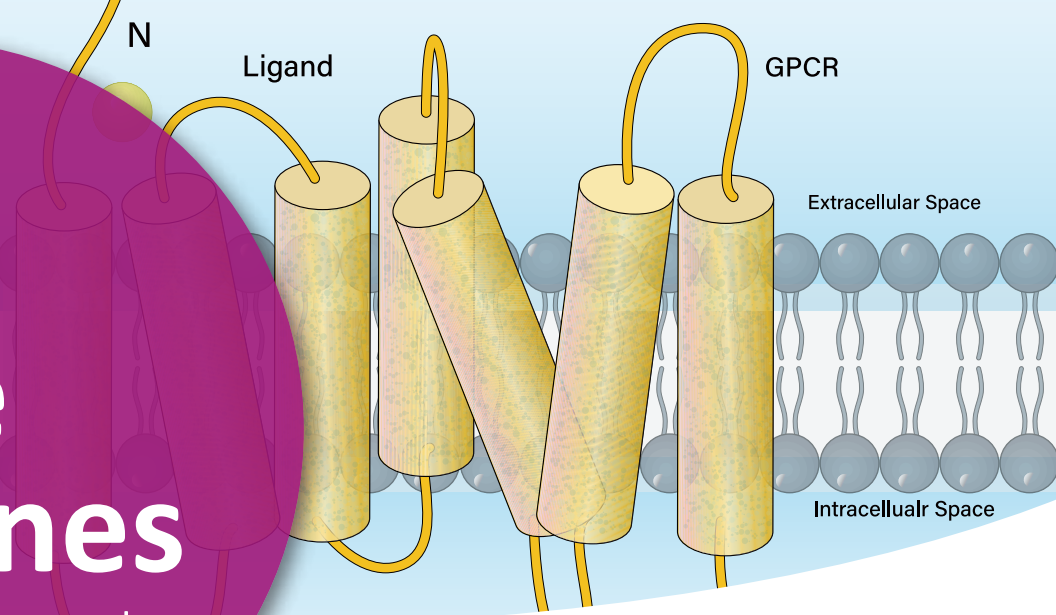
Figure 2. Validation of receptor expression. FACS analysis of human CD16A 158V expression in CHO-K1/human CD16A 158V clone. Cat. # M00597.

Product Overview

FcγR Type	Alias	Cell Line	Cat. No.
FcγRIIIa	CD16A	CHO-K1/CD16A 158F	M00586
		CHO-K1/CD16A 158V	M00597
FcγRIIIb	CD16B	CHO-K1/CD16B	M00602
FcγRIIa	CD32A	CHO-K1/CD32A 131His	M00598
FcγRIIb	CD32B	CHO-K1/CD32B 232Thr	M00600
FcγRIIc	CD32C	CHO-K1/CD32C 13Gln	M00601
FcγRI	CD64	CHO-K1/CD64	M00588
Neonatal Fc receptor	FcRn	CHO-K1/FcRn	M00603

GPCR Stable Cell Lines

150+ ready for screen products



Key features

- High functional protein expression on the cell surface
- Stable cell lines for increased reliability and reproducibility
- Flexible functional readouts are available
- Ga15 expressing cells can be used directly for FLIPR analysis

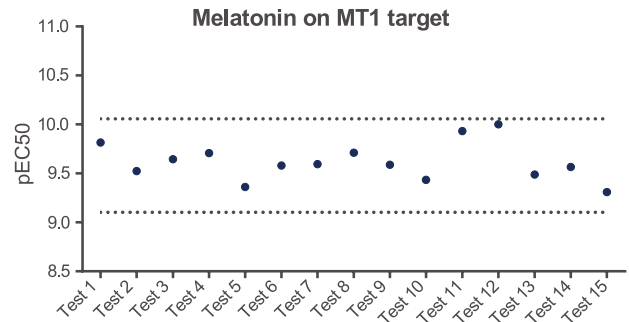


Fig.3 MT1 GPCR assay detecting intracellular calcium mobilization on CHO-K1/MT1/Gα15 cells(Cat.no M00424). An example of reproducibility over 15 tests.

View by GPCR Receptor Family

5-Hydroxytryptamine receptor	Acetylcholine receptor (muscarinic)	Adenosine receptor	Adrenoceptors	Angiotensin receptor
Apelin receptor	Bile acid receptor	Bombesin receptor	Bradykinin receptor	Calcitonin
Calcitonin receptor	Calcium-sensing receptor	Cannabinoid receptor	Chemerin receptor	Chemokine receptor
Cholecystinin receptor	Class A orphan	Complement peptide receptor	Control	Corticotropin releasing factor receptor
Dopamine receptor	Endothelin receptor	Formylpeptide receptor	Free fatty acid receptor	Galanin receptor
Glucagon receptor	Gonadotropin releasing hormone receptor	Growth hormone releasing peptides receptor	Histamine receptor	Hydroxycarboxic acid receptor
Kisspeptin receptor	Leukotriene receptor	Lysophospholipid receptor	Melanin concentrating hormone receptor	Melanocortin receptor
Melatonin receptor	Metabropic glutamate receptor	Motilin receptor	Neuromedin receptor	Neuropeptide S receptor
Neuropeptide Y receptor	Neurotensin receptor	Opioid & opioid-like receptor	Orexin receptor	P2Y receptor
Parathyroid hormone receptor	Peptide P518 receptor	Platelet activating factor receptor	Prolactin releasing peptide receptor	Prostanoid receptor
Proteinase-activated receptor	Somatostatin receptor	Tachykinin receptor	Thyrtropin releasing hormone receptor	Urotensin receptor
Vasopressin and oxytocin receptor	VIP, Vasoactive intestinal polypeptide receptor 2	VIP, Vasoactive intestinal polypeptide receptor 3	VIP, Vasoactive intestinal polypeptide receptor 4	

Immune Checkpoint Stable Cell lines

Hot targets for functional and binding assays

Key features

- Pre-made and ready-to-use
- Cell lines for binding assays: High level surface expression verified by FACS assay
- Reporter cell lines for functional assays: high S/B ratio for easy signal detection

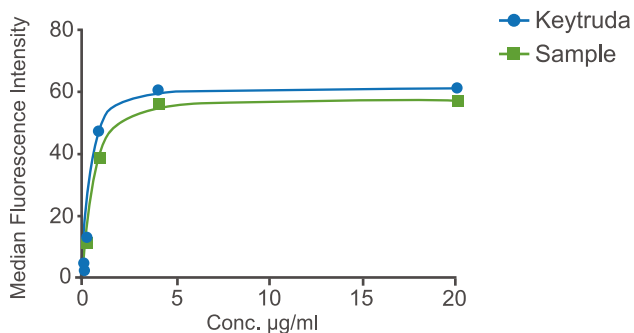


Fig. 1A FACS binding assay on CHO-K1/PD1 cells (Cat.No M00529)

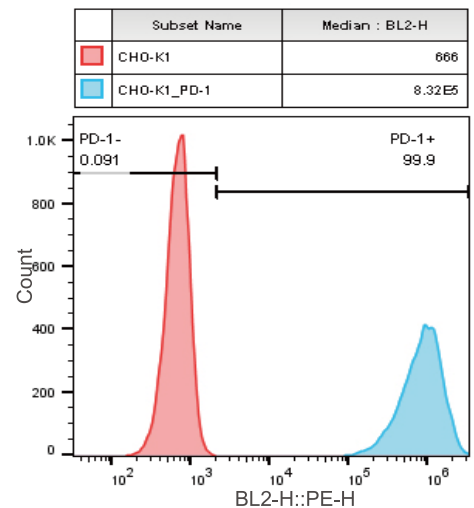


Fig. 1B FACS analysis of PD-1 expression on the surface of CHO-K1/PD-1 cells (Cat. No. M00529)

Popular Products

Immune Checkpoint	Cell Line	Cat.No.
Tim3	CHO-K1/Tim3	M00531
Lag3	CHO-K1/Lag3	M00532
CTLA4	CHO-K1/CTLA4	M00530
FLT3	CHO-K1/FLT3	M00576
VISTA	CHO-K1/VISTA	M00533
4-1BB	CHO-K1/4-1BB	M00538
BTLA	CHO-K1/BTLA	M00534
CD80	CHO-K1/CD80	M00545
PD1	CHO-K1/PD1	M00529
PD-L1	CHO-K1/PD-L1	M00543

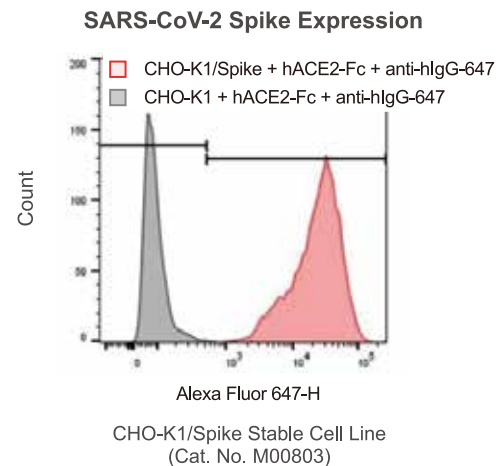
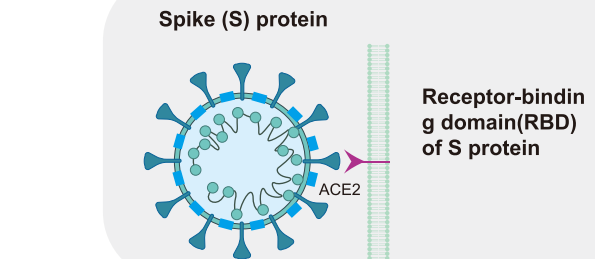
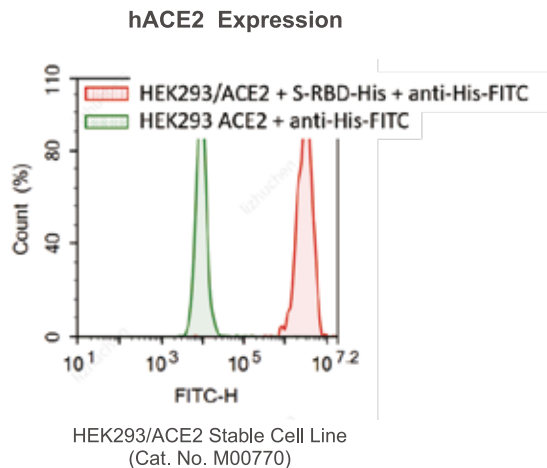
COVID-19 Related Stable Cell Lines

For COVID research and vaccine development

Key Features

- Single clone cell line
- Full length expression of target proteins on surface of host cells
- Stable expression over passages
- Easy to use in binding assays or as immunogen

Surface Expression Validation



Product List

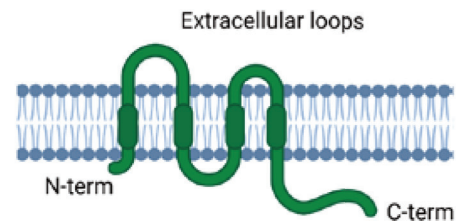
Protein of Expression	Cell Line	Cat.No.
ACE2	HEK293/ACE2	M00770
ACE2	CHO-K1/ACE2	M00771
SARS-CoV-2 Spike protein	CHO-K1/Spike	M00803
SARS-CoV-2 Spike protein	HEK293T/Spike	M00804

CLDN18.2 Stable Cell Lines

For drug discovery on gastric and pancreatic adenocarcinoma

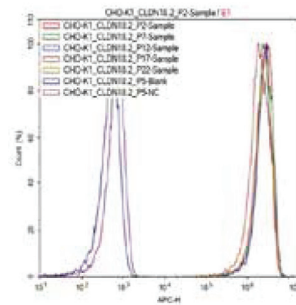
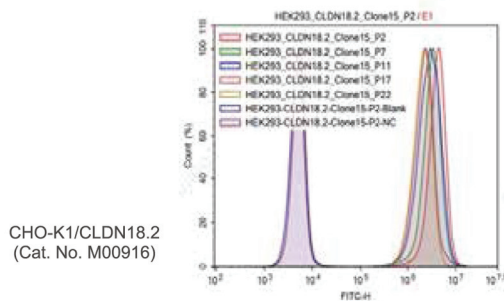
Key Features

- Single clone cell line
- Full length expression of CLDN18.2 protein on surface of host cells
- Stable expression over passages
- Easy to use in binding assays or as immunogen



Stable Surface Expression Validation

Cldn18.2 Expression By Antibody Staining And FACS Analysis



Product List

Protein of Expression	Cell Line	Cat.No.
CLDN18.2	CHO-K1/CLDN18.2	M00916
CLDN18.2	HEK293/CLDN18.2	M00917

Learn more



860 Centennial Ave., Piscataway, NJ 08854, USA | Tel: 1-732-885-9188 | Toll-Free: 1-877-436-7274 | Fax: 1-732-210-0262 | Email: product@genscript.com
 All Rights Reserved. All content described by GenScript is copyright of GenScript Corporation unless specifically identified otherwise. This includes all imagery, text and programmatic computer code.



1-888-593-5969 • www.biolynx.ca • tech@biolynx.ca