

Sphingolipidoses Pathways

Gangliosides, Sulfatides, Sphingomyelins

Sphingosine

Acid Ceramidase
Farber's Disease

Ceramide

β -Glucosidase
Gaucher Disease

Glucosylcerebroside

β -Galactosidase
Krabbe Disease

Lactosylceramide

Ganglioside Neuraminidase
Sialidosis

GM₃

Hexosaminidase A
Tay-Sachs Disease
Sandhoff Disease

GM₂

Acid β -Galactosidase
GM₁ Gangliosidosis

GM₁

Available in Canada from...

MJS
BioLynx
INC.

1-888-593-5969 • www.biolyx.ca • tech@biolyx.ca

Sphingomyelinase
Niemann-Pick Disease Types A and B

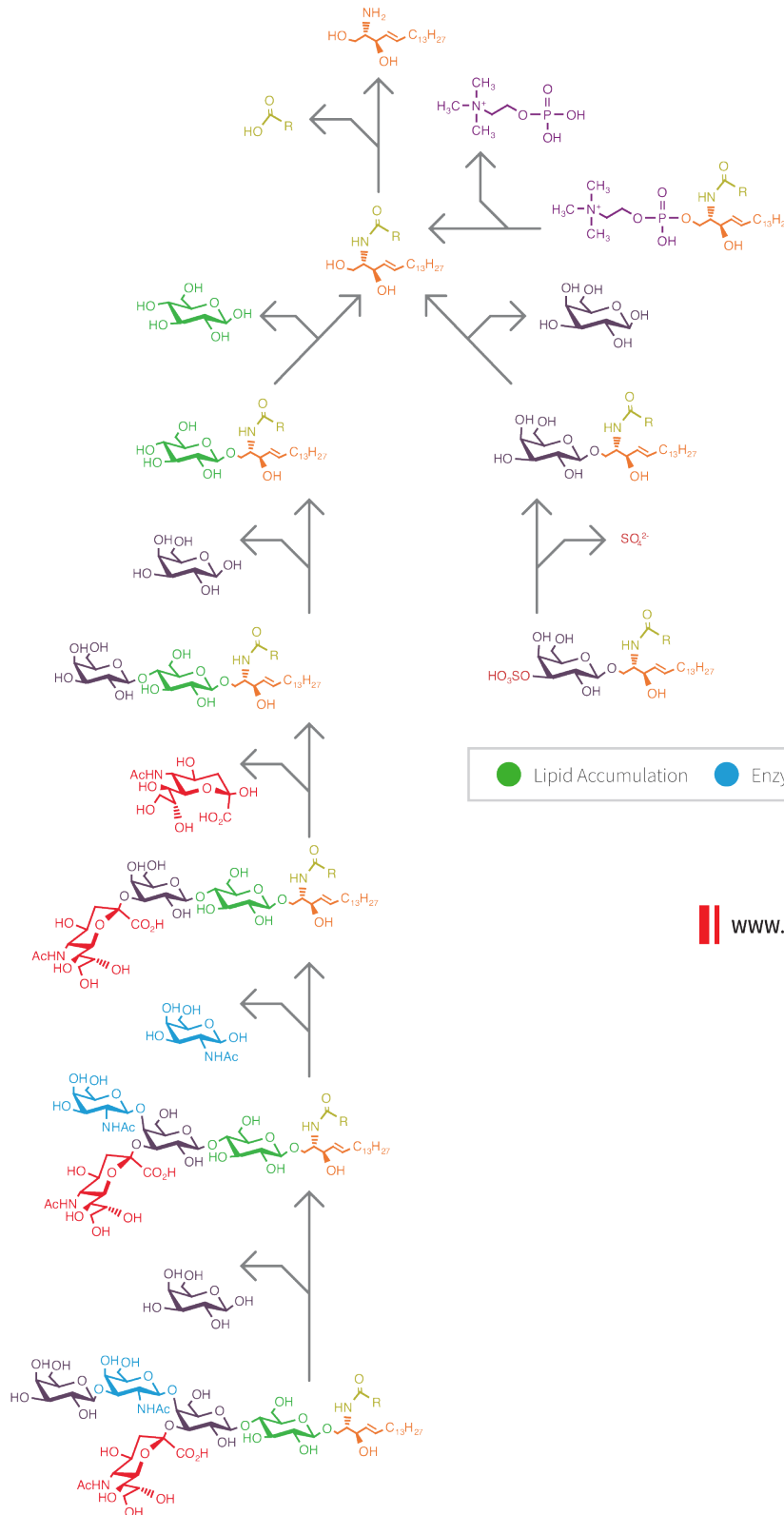
Sphingomyelin

β -Galactosidase
Krabbe Disease

Galactosylcerebroside

Arylsulfatase A
Metachromatic Leukodystrophy

Sulfatide



● Lipid Accumulation ● Enzyme Deficiency ● Associated Disease

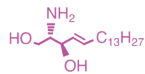
WWW.MATREYA.COM



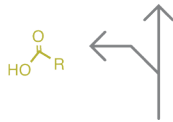
Sphingolipidoses Pathways

Globosides

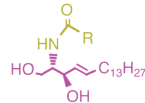
Sphingosine



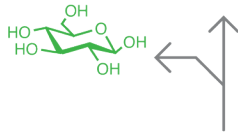
Acid Ceramidase
Farber's Disease



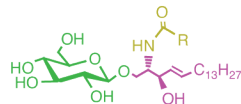
Ceramide



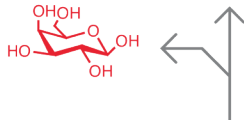
β -Glucosidase
Gaucher Disease



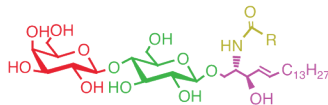
Glucosylceramide



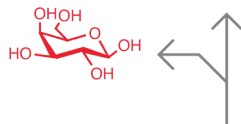
β -Galactosidase
Krabbe Disease



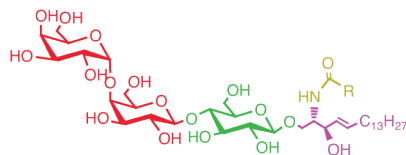
Lactosylceramide



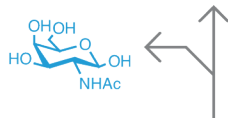
α -Galactosidase A
Fabry Disease



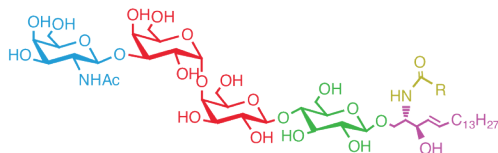
Gb₃ (CTH)



β -Hexosaminidase A + B
Sandhoff Disease



Gb₄



● Lipid Accumulation ● Enzyme Deficiency ● Associated Disease

WWW.MATREYA.COM