

# PRODUCT DATA SHEET



**BML-UW1000**

**SUMO-Qapture-T kit**

## Product Number/Sizes

BML-UW1000-0001

1 Kit

## Product Specifications

KIT/SET CONTAINS:

**SUMO-Qapture-T matrix** (Prod. No. BML-UW0980)  
200 µL settled resin provided, 50% suspension

**Control SUMOylated-protein lysate** (Prod. No. BML-UW0985)  
200 µg (100µL), 2mg/mL in 50mM TRIS-Cl, pH 7.5, 150mM sodium chloride, 1% NP-40, 0.5% deoxycholate, 200mM iodoacetamide

**SUMO-1, sheep polyclonal antibody** (Prod. No. BML-KW0505)  
10µL

**SUMO-2/3, sheep polyclonal antibody** (Prod. No. BML-KW0510)  
10µL

**0.5mL Screw capped tube pack** (Prod. No. BML-UW0990)  
10 Tubes

APPLICATION:

For the isolation and enrichment of SUMOylated proteins.

1. Capture and isolation of SUMO-protein conjugates from specific cell/tissue lysates of interest with subsequent detection and analysis by Western blotting.
2. Identification of SUMO-modified protein substrates by proteomic analysis methods following release of free SUMOylated proteins in denatured form.
3. Selective purification/pull down of SUMOylated proteins from *in vitro* SUMOylation assays.

QUANTITY:

Sufficient for 10 binding assays.

SHIPPING:

SHIPPED ON DRY ICE

SHORT TERM STORAGE:

-80°C

LONG TERM STORAGE:

-80°C

USE/STABILITY:

SUMO-Qapture-T matrix should be stored at **4°C upon receipt**. All other components should be stored at 80°C to ensure stability and activity.

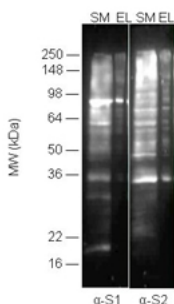
HANDLING:

Avoid freeze/thaw cycles.

## Background/Technical Information

For the Manual please click here.

## Images



**Figure:** Western blot analysis of SUMO-Qapture enrichment of lysate derived SUMO-1 and SUMO-2/3 modified proteins.

SUMO-Qapture experiment set-up and run as described in the manual in Capture / enrichment of SUMOylated proteins. SUMO-1 and SUMO-2/3 conjugates present in Starting Material and Elution Fraction were detected by Western blotting as described in Analysis by Western blotting, using the provided SUMO-1 (Prod. No. BML-UW0505) and SUMO-2/3 (Prod. No. BML-UW0510) antibodies at dilutions of 1:1000 and 1:500 respectively.

Capture of SUMO-protein conjugates from Control SUMOylated-protein lysate (Prod. No. BML-UW0985).

### NORTH/SOUTH AMERICA

ENZO LIFE SCIENCES INTERNATIONAL, INC.  
5120 Butler Pike  
Plymouth Meeting, PA 19462-1202  
USA  
T 1-800-942-0430/(610) 941-0430  
F (610) 941-9252  
E info-usa@enzolifesciences.com

### SWITZERLAND & REST OF EUROPE

ENZO LIFE SCIENCES AG  
Industriestrasse 17, Postfach  
CH-4415 Lausen  
Switzerland  
T +41/0 61 926 89 89  
F +41/0 61 926 89 79  
E info-ch@enzolifesciences.com  
www.enzolifesciences.com

### GERMANY

ENZO LIFE SCIENCES GMBH  
Marie-Curie-Strasse 8  
DE-79539 Lörrach  
Germany  
T +49/0 7621 5500 526  
Toll Free 0800 664 9518  
F +49/0 7621 5500 527  
E info-de@enzolifesciences.com  
www.enzolifesciences.com

### BENELUX

ENZO LIFE SCIENCES BVBA  
Melkerijweg 3  
BE-2240 Zandhoven  
Belgium  
T +32/0 3 466 04 20  
F +32/0 3 466 04 29  
E info-be@enzolifesciences.com  
www.enzolifesciences.com

### UK & IRELAND

ENZO LIFE SCIENCES (UK) LTD.  
Palatine House  
Matford Court  
Exeter EX2 8NL  
UK  
T 0845 601 1488 (UK customers)  
T +44/0 1392 825900 (from overseas)  
F +44/0 1392 825910  
E info-uk@enzolifesciences.com  
www.enzolifesciences.com

### FRANCE

ENZO LIFE SCIENCES  
c/o Covalab s.a.s  
13, Avenue Albert Einstein  
FR-69100 Villeurbanne  
France  
T +33 472 440 655  
F +33 437 484 239  
E info-fr@enzolifesciences.com  
www.enzolifesciences.com

Key: SM = Starting Material and EL = Elution Fraction.

Revised 25-May-10



**NORTH/SOUTH AMERICA**

ENZO LIFE SCIENCES INTERNATIONAL, INC.  
5120 Butler Pike  
Plymouth Meeting, PA 19462-1202  
USA  
T 1-800-942-0430/(610) 941-0430  
F (610) 941-9252  
E info-usa@enzolifesciences.com

**SWITZERLAND & REST OF EUROPE**

ENZO LIFE SCIENCES AG  
Industriestrasse 17, Postfach  
CH-4415 Lausen  
Switzerland  
T +41/0 61 926 89 89  
F +41/0 61 926 89 79  
E info-ch@enzolifesciences.com  
www.enzolifesciences.com

**GERMANY**

ENZO LIFE SCIENCES GMBH  
Marie-Curie-Strasse 8  
DE-79539 Lörrach  
Germany  
T +49/0 7621 5500 526  
Toll Free 0800 664 9518  
F +49/0 7621 5500 527  
E info-de@enzolifesciences.com  
www.enzolifesciences.com

**BENELUX**

ENZO LIFE SCIENCES BVBA  
Melkerijweg 3  
BE-2240 Zandhoven  
Belgium  
T +32/0 3 466 04 20  
F +32/0 3 466 04 29  
E info-be@enzolifesciences.com  
www.enzolifesciences.com

**UK & IRELAND**

ENZO LIFE SCIENCES (UK) LTD.  
Palatine House  
Matford Court  
Exeter EX2 8NL  
UK  
T 0845 601 1488 (UK customers)  
T +44/0 1392 825900 (from overseas)  
F +44/0 1392 825910  
E info-uk@enzolifesciences.com  
www.enzolifesciences.com

**FRANCE**

ENZO LIFE SCIENCES  
c/o Covalab s.a.s  
13, Avenue Albert Einstein  
FR-69100 Villeurbanne  
France  
T +33 472 440 655  
F +33 437 484 239  
E info-fr@enzolifesciences.com  
www.enzolifesciences.com

**WARNING:** THIS PRODUCT IS NOT INTENDED OR APPROVED FOR HUMAN, DIAGNOSTICS OR VETERINARY USE. USE OF THIS PRODUCT FOR HUMAN OR ANIMAL TESTING IS EXTREMELY HAZARDOUS AND MAY RESULT IN DISEASE, SEVERE INJURY, OR DEATH.

**MATERIAL SAFETY DATA:** This material should be considered hazardous until information to the contrary becomes available. Do not ingest, swallow, or inhale. Do not get in eyes, on skin, or on clothing. Wash thoroughly after handling. This information contains some, but not all, of the information required for the safe and proper use of this material. Before use, the user must review the complete Material Safety Data Sheet.

**WARRANTY AND LIMITATION OF REMEDY:** Enzo Life Sciences AG; Enzo Life Sciences International, Inc.; Enzo Life Sciences GmbH; Enzo Life Sciences (UK) Ltd. and Enzo Life Sciences BVBA („The Companies“) make no warranty of any kind, expressed or implied, including, but not limited to, the warranties of fitness for a particular purpose and merchantability, which extends beyond the description of the chemicals on the face hereof, except that the material will meet our specifications at the time of delivery. Buyer's exclusive remedy and the Companies' sole liability hereunder shall be limited to refund of the purchase price of, or at the Companies' option the replacement of, all material that does not meet our specifications. The Companies shall not be liable otherwise or for incidental or consequential damages, including, but not limited to, the costs of handling. Said refund or replacement is conditioned on Buyer giving written notice to the Companies within thirty (30) days after arrival of the material at its destination. Failure of Buyer to give said notice within said thirty (30) days shall constitute a waiver by Buyer of all claims hereunder with respect to said material.