



Introducing: CrimsonBase QuickGene Software

Streamline your labwork with an intuitive, user-friendly software program for DNA analysis.

What It Is:

QuickGene is a molecular biology program for DNA analysis, assembly and cloning. Scientists deserve decent, modern software that doesn't require manuals or training courses to learn to use, and that's where QuickGene comes in.

Built by scientists for scientists, it is the aim of QuickGene to be exceedingly user-friendly and intuitive, while making no sacrifices in functionality and incorporating all necessary functions in a single application. New features are available each month at no charge, as QuickGene continues to meet the changing demands of its customers.



Features:

- Available for Windows or Mac
- Aesthetically pleasing interface
- Digitalized catalog of all commercially available restriction enzymes with added information (including: optimal reaction conditions for each enzyme reaction temp., heat-deactivation temp., methylation sensitivity and **new** methylation alerts to signal that methylation sites may hinder a restriction enzyme's performance)

Benefits:

- Free monthly updates
- Affordable price
- Quick and easy to learn with NO MANUALS
- Intuitive software
- Ability to create personal plug-ins through Java
- A personal data folder for your PC or Mac saves all data and customizations (your data is unaffected by software updates or uninstalls of the program)



Let us show you how user-friendly and helpful QuickGene is!

Contact us for more information, or visit CrimsonBase online (www.CrimsonBase.com) to download a free 10-day trial of QuickGene!

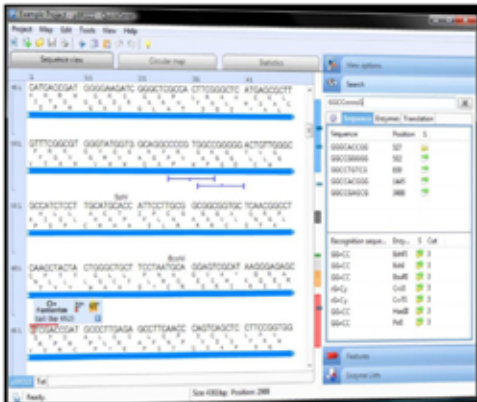


For further information, please contact MJS BioLynx Inc. at:
1-888-593-5969 • www.biolynx.ca • tech@biolynx.ca

QuickGene Features:

Up-to-date list of restriction enzymes

New restriction enzymes are discovered regularly, but QuickGene ensures that your research can be conducted with the latest additions to your enzyme supplier's catalog. QuickGene updates its database automatically, putting every enzyme at your disposal, and including optimal reaction conditions for each (like reaction temperature, heat-deactivation temperature, methylation sensitivity, star activity, and buffer activity from over a dozen enzyme suppliers).

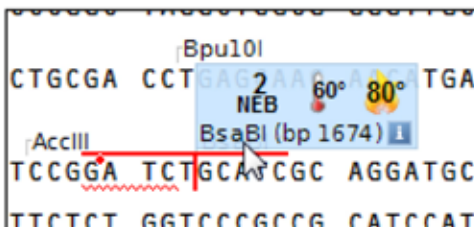


Easy-to-use, clean, friendly design

The modern interface is designed to be highly intuitive: no more hunting through menus to find specific features. QuickGene's logical design eliminates excess menus, buttons, and windows, leaving more a functional software layout.

Simple, robust search engine

QuickGene proudly contains the most robust search engine in any sequence analysis software. Easy to use, it searches while you type. Whether you are looking for an enzyme, genetic sequence, or translation, QuickGene offers all the results of a search neatly organized in tabs. Results are displayed within your sequence and maps, each clearly indicating its direction and strand. Set up specific options for your work; all ambiguous bases (such as S for C or G) are supported.

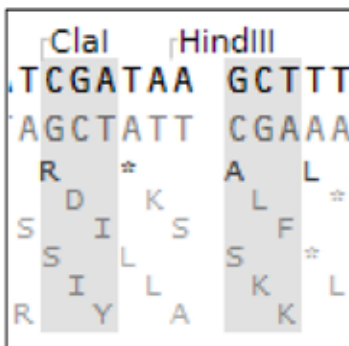


Interactive restriction maps with intuitive navigation

QuickGene gives users the ability to turn features on and off, check enzyme reaction conditions and zoom and pan the images. Maps also provide a useful overview of subsequent recognition-sites - holding the cursor over an enzyme highlights all other sites.

Plug-ins

QuickGene is powered by a plug-in system, so that every function you see is part of a created plug-in. This means that new functionality will be continuously added, and that in the near future, anyone with Java programming skills can make their own custom plug-ins. Potential uses for QuickGene will be limitless! You can offer your plug-ins to the rest of the research community, helping to make even better, more functional software for everyone.



Reading frame highlighting and translation tables

Forget trying to determine which amino acid starts at which base in your sequence: hold the cursor over any reading frame to highlight the corresponding triplets. Translations tables can easily be changed or used for reference.

Create, edit and stylize features

QuickGene allows multiple ways to create and edit features, decreasing the time spent on annotating your sequence. Stylize your features to your liking, and make it as complex as needed - QuickGene is the only software capable of handling thousands of features in a single file, especially your million-nucleotide, annotated GenBank file.

QuickGene Pricing

Product Number	Description	BioLynx List Price
MSMCB1000	1-year QuickGene subscription with free monthly updates	\$499.00



For further information, please contact *MJS BioLynx Inc.* at:

1-888-593-5969 • www.biolynx.ca • tech@biolynx.ca